

## Light efficiency:

**114 Lumen/Watt**

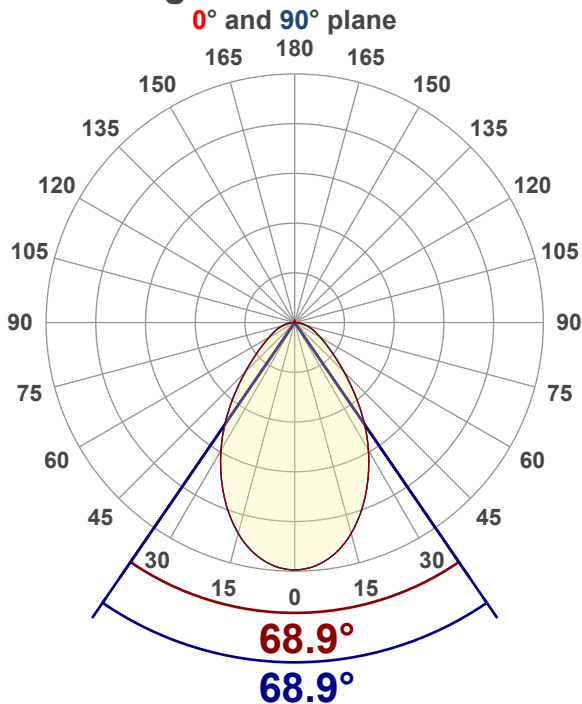
## Color temperature:

**4145 K**

## Light quality:

**CRI:83.4, R<sub>g</sub>:91.3, R<sub>f</sub>:82.3****P: - / V: - / F: -****Output: 3236 lm****Peak: 2152 cd****Power: 28.3 W****Voltage: 120 V****Current: 0.237 A****PF: 0.99****THD: 5.77 %**

## Angular Distribution



Product name:

**EDGE-33-WH - DLC - 40K 30W**

Test Date:

**2019-05-29**

Beam Angle (50% of the brightness of the centre):

**68.9°**

Field Angle (10% of the brightness of the centre):

**127.3°**

Cut Off Angle (2.5% of the brightness of the centre):

**163.9°**

## Beam Details

\*measured at centre of beam

Mounting Height (feet)\(meter)	Lux*	Footcandles*	Beam width (feet) / (meter)
4 ft / 1.2 m	1448 lx	134 fc	5.5 ft / 1.7 m
8 ft / 2.4 m	362 lx	34 fc	11 ft / 3.3 m
12 ft / 3.7 m	161 lx	15 fc	16.5 ft / 5 m
16 ft / 4.9 m	90 lx	8 fc	21.9 ft / 6.7 m
20 ft / 6.1 m	58 lx	5 fc	27.4 ft / 8.4 m

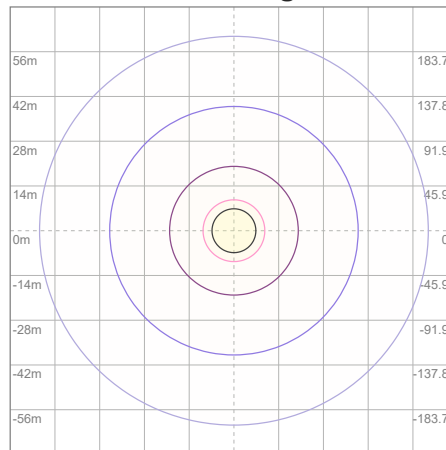
Beam center

# Photometric Testing Report

## Zonal Lumen Summary

Zone	Lumen	%Luminaire
0-30	1423	43.97%
0-40	2075	64.12%
0-60	2855	88.23%
60-90	353	10.91%
70-100	156	4.82%
90-120	12.1	0.37%
0-90	3208	99.13%
90-180	28.5	0.88%
0-180	3236	100.00%

## ISO Lux Diagram



Lux at center:	231 lx
3%	6.93 lx
5%	11.55 lx
10%	23.10 lx
30%	69.30 lx
50%	115.50 lx

### Conditions:

Number of planes: 8

Lux distribution on a surface when lamp is mounted at 3.05 meters from the surface.

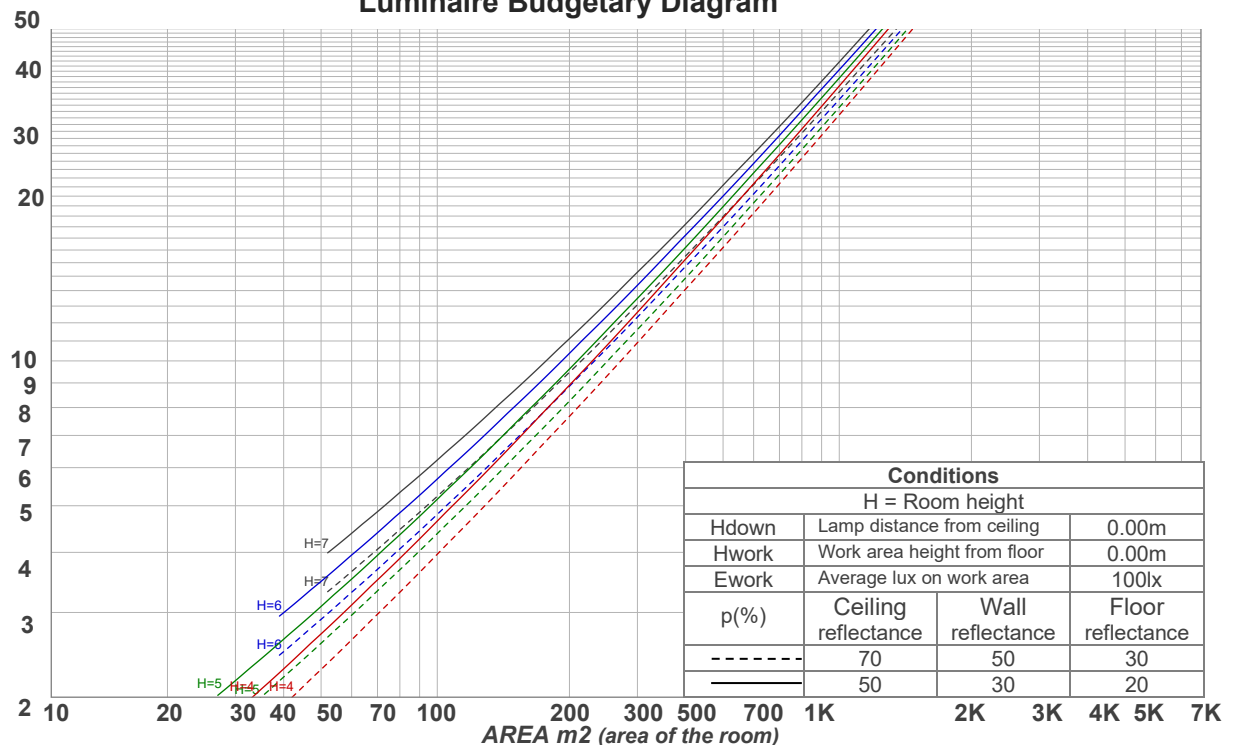
Mounting height: 3.05 meters (10 feet)

## Coefficients of Utilization

Ceiling reflectance	80				70				50			30			10			0
Wall reflectance	70	50	30	10	70	50	30	10	50	30	10	50	30	10	50	30	10	0
Floor reflectance	20	20	20	20	20	20	20	20	20	20	20	20	20	20	20	20	20	0
RCR	(RCR: Room Cavity Ratio) Room Values are expressed as percentage of Lumens delivered to the task surface																	
0	119	119	119	119	116	116	116	116	111	111	111	106	106	106	101	101	101	99
1	111	107	103	100	108	104	101	98	100	98	95	96	94	92	92	91	89	87
2	103	96	90	86	100	94	89	84	90	86	82	87	84	80	84	81	79	77
3	95	86	80	74	93	85	79	74	82	77	72	79	75	71	77	73	70	68
4	89	79	71	65	86	77	70	65	75	69	64	72	67	63	70	66	62	60
5	83	72	64	58	81	71	63	58	69	62	57	67	61	57	65	60	56	54
6	77	66	58	53	75	65	58	52	63	57	52	61	56	51	60	55	51	49
7	72	61	53	48	71	60	53	47	58	52	47	57	51	47	56	50	46	45
8	68	56	49	44	67	55	48	43	54	48	43	53	47	43	52	47	43	41
9	64	52	45	40	63	52	45	40	50	44	40	49	44	39	48	43	39	38
10	61	49	42	37	59	48	41	37	47	41	37	46	41	37	45	40	36	35

LAMPS (number of lamps)

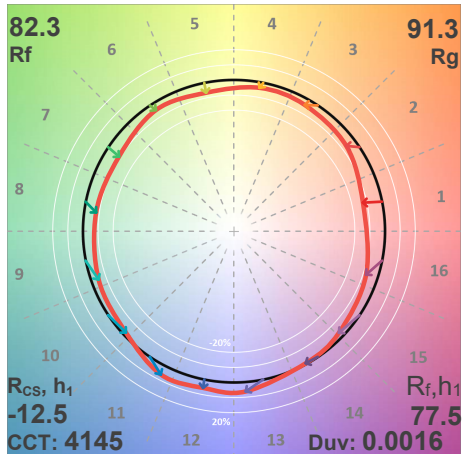
## Luminaire Budgetary Diagram



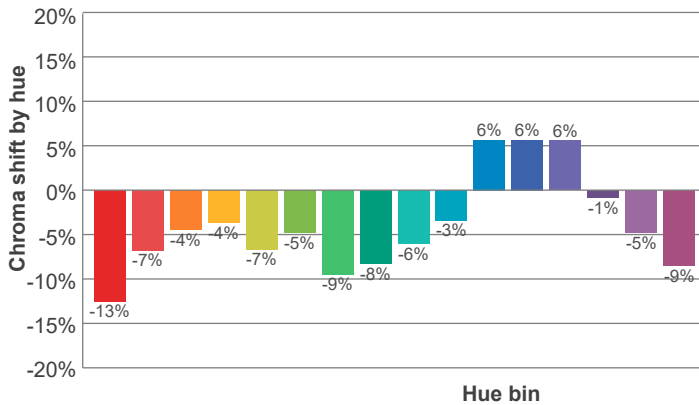
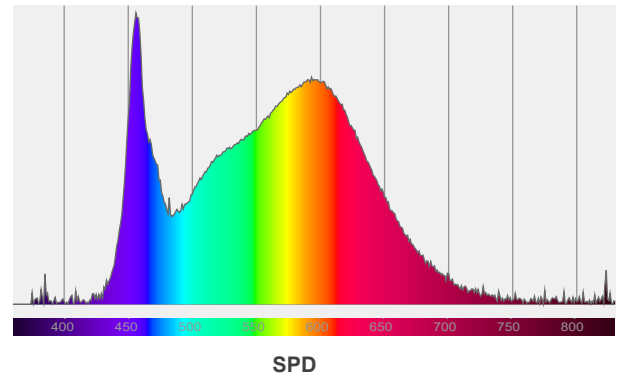
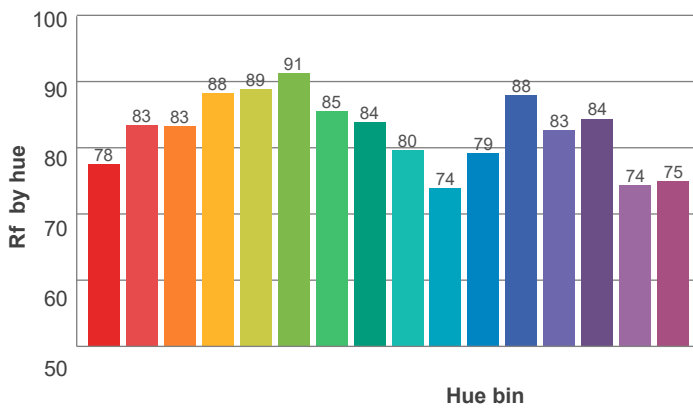
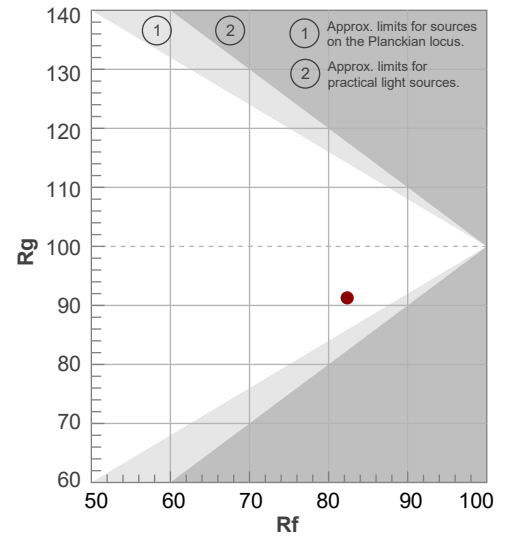
## Photometric Testing Report

ANSI/IES TM-30-18

P: - / V: - / F: -



Hue Bin	R <sub>f</sub>	Shifts (%)	
		Chroma	Hue
1	78	-13%	2%
2	83	-7%	6%
3	83	-4%	7%
4	88	-4%	2%
5	89	-7%	0%
6	91	-5%	-2%
7	85	-9%	1%
8	84	-8%	6%
9	80	-6%	14%
10	74	-3%	16%
11	79	6%	13%
12	88	6%	0%
13	83	6%	-13%
14	84	-1%	-9%
15	74	-5%	-17%
16	75	-9%	-11%



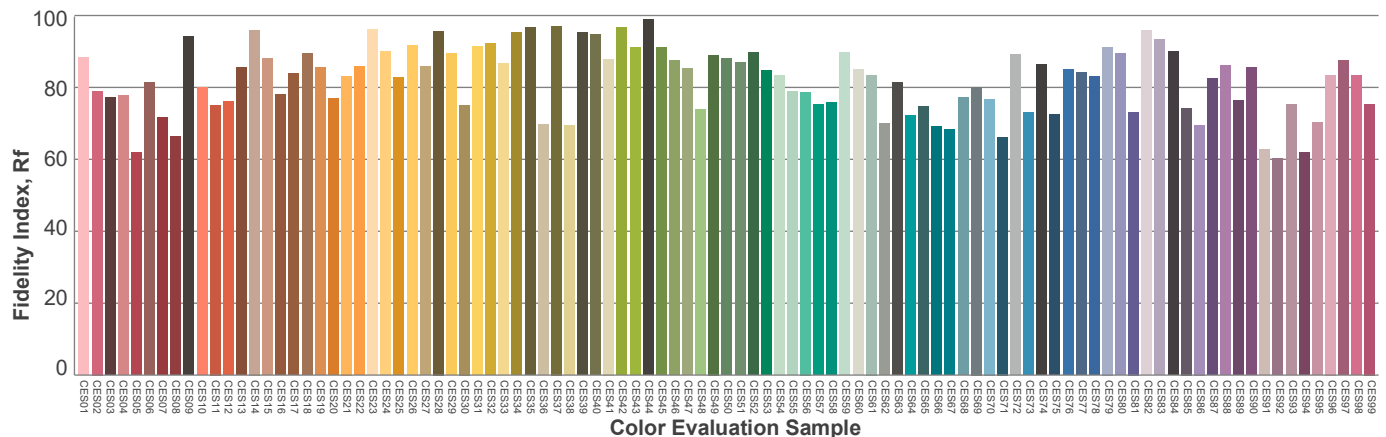
Red: 20.5%, Power=12.3mW

Blue: 18.1%, Power=36.6mW

Green: 30.2%, Power=41.1mW

UVA: 0.4%, Power=2.8mW

Dominant Wavelength: 580nm

1<sup>st</sup> Peak Wavelength: 456nm2<sup>nd</sup> Peak Wavelength: 593nm

**Glare Evaluation According to UGR**

Corrected, comprehensive UGR table according to 117-1995, S/H ratio=0.25

p Ceiling		70	70	50	50	30	70	70	50	50	30
p Walls		50	30	50	30	30	50	30	50	30	30
p Floor		20	20	20	20	20	20	20	20	20	20
Room size H = mounting height above eye level  X      Y		Viewing direction at right angles to lamp axis					Viewing direction parallel to lamp axis				
2H	2H	11.9	12.8	12.1	13.1	13.3	11.9	12.8	12.1	13.1	13.3
	3H	12.7	13.8	13.1	14.0	14.2	12.7	13.8	13.1	14.0	14.2
	4H	13.2	14.2	13.6	14.5	14.7	13.2	14.2	13.6	14.5	14.7
	6H	13.7	14.5	14.0	14.8	15.2	13.7	14.5	14.0	14.8	15.2
	8H	13.8	14.6	14.1	14.9	15.3	13.8	14.6	14.1	14.9	15.3
	12H	13.8	14.6	14.2	15.0	15.4	13.8	14.6	14.2	15.0	15.4
4H	2H	12.2	13.1	12.6	13.4	13.7	12.2	13.1	12.6	13.4	13.7
	3H	13.4	14.2	13.8	14.6	15.0	13.4	14.2	13.8	14.6	15.0
	4H	13.9	14.7	14.4	15.1	15.7	13.9	14.7	14.4	15.1	15.7
	6H	14.5	15.2	15.0	15.6	15.9	14.5	15.2	15.0	15.6	15.9
	8H	14.6	15.3	15.2	15.7	16.1	14.6	15.3	15.2	15.7	16.1
	12H	14.8	15.3	15.3	15.7	16.2	14.8	15.3	15.3	15.7	16.2
8H	4H	14.2	14.8	14.7	15.2	15.6	14.2	14.8	14.7	15.2	15.6
	6H	14.9	15.3	15.4	15.8	16.4	14.9	15.3	15.4	15.8	16.4
	8H	15.2	15.6	15.7	16.1	16.7	15.2	15.6	15.7	16.1	16.7
	12H	15.3	15.7	15.9	16.2	16.8	15.3	15.7	15.9	16.2	16.8
12H	4H	14.2	14.7	14.7	15.1	15.6	14.2	14.7	14.7	15.1	15.6
	6H	14.9	15.4	15.5	15.9	16.5	14.9	15.4	15.5	15.9	16.5
	8H	15.2	15.6	15.8	16.1	16.7	15.2	15.6	15.8	16.1	16.7
Variation of the observer position for the luminaire distance S											
S = 1.0H		0.2 / -0.3					0.2 / -0.3				
S = 1.5H		0.6 / -0.6					0.6 / -0.6				
S = 2.0H		1.1 / -0.9					1.1 / -0.9				
Corrected glare indices referring to 3236 lm total luminous flux											